

Activities

The BNAC provides creative and thoughtful activities for both adults and children.

Art Gallery displays by local artists change several times a year.

Classes and Presentations are offered on a variety of topics.

Summer Concerts are held in the amphitheater.

Festivals celebrate nature, art and community.

Artists (Wood carvers, quilters, spinners, painters, photographers, musicians, and more) are often in the park or building.

Tours relating to history and nature are available by calling the office.

Check our website frequently for upcoming activities and events.



Volunteer

Friends of the BNAC share their time and talents year-round. If you are interested in becoming a volunteer, please call the center. Applications are also available on our website.

About the Grounds

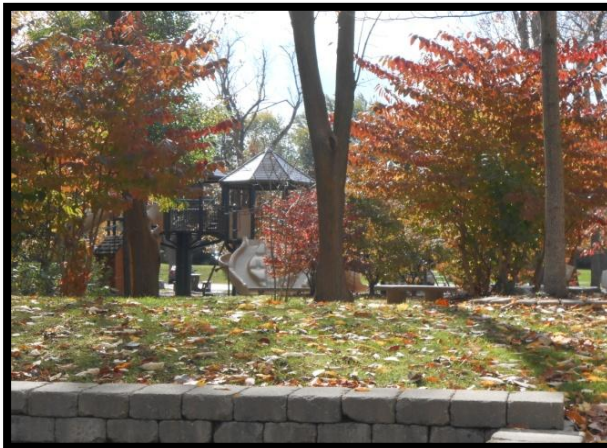
There are 29 acres of property located along Buffalo Creek. About 19 acres are accessible to the public. Paths and boardwalks lead through wooded areas, gardens and along the creek. Picnic tables and benches are available throughout the park. A play area for children is located near the parking lot and our amphitheater rests near the creek.

Gardens and foliage change with the seasons making every visit a new experience of sights, sounds and aromas. The parklands are maintained by the Town of West Seneca employees and many volunteers. **Garden Clubs** enhance the beauty of the grounds. **Environmental groups** partner with the BNAC.

The grounds are opened dawn to dusk daily.

Visitors are reminded:

- Dogs must be on a leash
- Place all litter in trash cans
- No alcoholic beverages are allowed in park
- Do not pick flowers or climb trees
- Do not feed the wildlife
- Stay on trails while walking in the park
- Respect the tables and other comfort features



“To assure that the BNAC will continue to serve the community interests in the areas of art, recreation, music, history and nature by providing a welcoming and educational facility.”

Mission Statement of the Friends of the
Burchfield Nature and Art Center

2001 Union Road
West Seneca, NY 14224
716-677-4843

Burchfieldnac.org

Find us on Facebook:
The New Charles E. Burchfield
Nature and Art Center



HISTORY

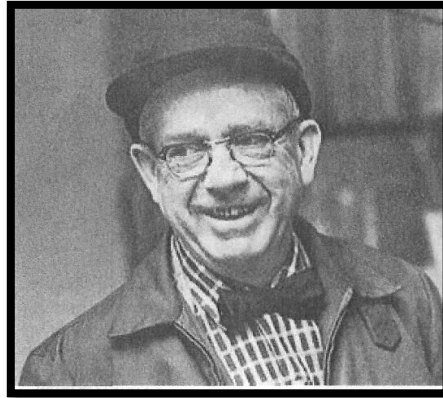
Originally a part of the Buffalo Creek Reservation, members of the Seneca Nation made this area their home until 1842 when the Treaty of Buffalo Creek led to their relocation. They valued the land, water and wildlife. Native American influence is evident at the BNAC in the Treaty of 1842 Commemoration area and through activities that include the Seneca Nation.

The Society of the True Inspiration, a group of German immigrants, acquired and settled on this land in 1843. They became known as the Ebenezers, a communal society where everything was done for the good of the community. They remained in the area for 20 years and provided a foundation for the growth and development of the Town of West Seneca.

In the early 1900s, the property became home to the Island Park Hotel. The land around the building was known as Island Park and was a favored place for picnicking, canoeing and community gatherings. After the Island Park Hotel was destroyed by fire in 1974, the area was left vacant.

In 1998, the West Seneca Town Board chose the site to honor Charles Burchfield by re-developing the park lands and adding a building that includes the BNAC Gallery and classroom.

CHARLES E. BURCHFIELD



"An artist must paint, not what he sees in nature, but what is there. To do so, he must invent symbols, which if properly used, make his work seem even more real than what is in front of him."

Charles E. Burchfield

Charles Burchfield is recognized as a famous American watercolorist. His work can be found in prestigious galleries and museums worldwide.

He was born in Ashtabula, Ohio in April 1893. He attended the Cleveland School of Art. In 1921, Mr. Burchfield moved to Buffalo to work for the Birge and Sons Wallpaper Company. He was fascinated with Buffalo's streets, harbor, railroad yards and the surrounding countryside.

Mr. Burchfield moved to West Seneca in 1925. He would frequently explore and paint in the area that is now the BNAC. This area served as an inspiration for many of his paintings. He lived on Clinton Street with his family until his death in 1967.

The Gazebo in the park faces the former home of Charles E. Burchfield. Throughout the park are descriptive plaques noting Mr. Burchfield's works.

NATURE

Woodlands, meadows and fresh water provide a welcoming environment for wildlife at the BNAC.

Visitors may see white-tailed deer, red fox, coyote, skunks, raccoons, squirrels, woodchucks, rabbits, opossums, bats, chipmunks, garter snakes, turtles, toads, and frogs.

Feathered friends include sparrows, woodpeckers, cardinals, blue jays, blue heron, geese, ducks, wild turkeys, owls and hawks. A variety of butterflies and insects also call this park home.

The woodland areas have maple, birch, hickory, locust, aspen, poplar, box elder, willow, basswood, ash and oak trees. They are complimented by a host of plants including: wild grape, rose, raspberry, sumac, spicebush, dogwood, hawthorn and viburnum. Garden areas throughout the park bloom from spring through fall. The spring daffodils provide a brilliant display. Wildflowers and grasses grace the meadows.

Even in winter, nature puts on a show. Hiking, snowshoeing and cross country skiing can be enjoyed throughout the park.

The Burchfield Nature and Art Center is a place to explore, learn, play and relax with nature.

*"As long as you live,
keep learning how to live."*

Segoyewatha [Red Jacket] (1750-1830);
Native American Seneca Chief, Orator

